



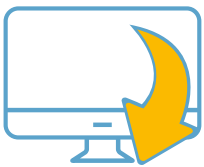
Pentecost

The Parish Family-Friendly Review



WHAT IS THIS INITIATIVE?

A parish audit inspired by *The Joy of Love*, looking at how the parish is engaging with the diversity of family life in its midst. It invites the parish to reflect on the present reality and come up with ideas on how to be more welcoming, supportive and inclusive of families in different situations.



WHAT RESOURCES ARE AVAILABLE AND WHERE?

- A step-by-step guide, downloadable from the WMOF website.
- Downloadable posters to use for promotional purposes within the parish.
- A free certificate to be sent out to parishes that complete the review.

WHY TAKE THIS INITIATIVE?

- In *The Joy of Love*, Pope Francis invites us to examine the pastoral work for families and the structures in place for them.
- The Parish Family-Friendly Review is a very concrete way of preparing for the World Meeting of Families. It engages the community in an initiative that will challenge and strengthen the parish structures to take *The Joy of Love* seriously, while renewing parish family life in the longer term.





HOW DOES THIS WORK IN A PARISH?

- 1** Download the step-by-step guide from our website.
- 2** Establish a working group to take on the review and agree with the working group on key elements, such as the time frame, how families can participate in the review, when feedback will be offered to the parish, etc.
- 3** Ideally on the Feast of Pentecost, when we celebrate the Church as the family of families, announce that a review of how family-friendly the parish is will be initiated in the coming weeks.
- 4** The parish is invited through the guide to look at a series of questions. The working group then reflects on how the parish is dealing with the variety of family situations as outlined in *The Joy of Love*.
- 5** The group identifies what the challenges are for the parish and identifies possible ways of responding to those challenges.
- 6** The group puts together a plan of action.
- 7** The challenge is completed when the discerning process is finished, the plan of action is drafted and the parish begins its first initiative. A parish plan could be further developed in time but this is not needed to complete the challenge.
- 8** The parish sends the WMOF2018 office its feedback and is issued with a certificate of completion.

